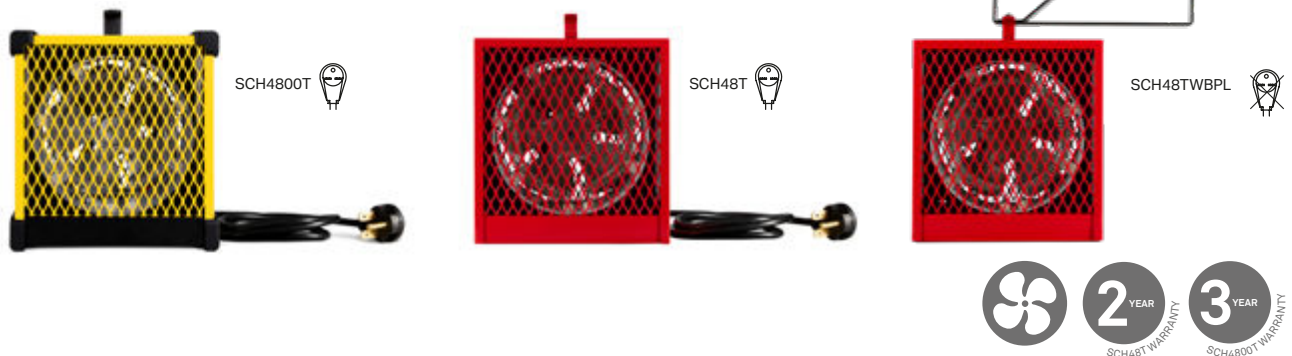


SCH

PORTABLE MULTIPURPOSE HEATER



EFFICIENT, SAFE AND VERSATILE

Any construction worker will tell you that the SCH is the fast-acting heating unit most often found on construction sites, hence its nickname: "the construction heater." Housed in a 20-gauge steel casing, it features a rugged protective grille and nichrome element for instant heat at start-up. Despite its small size, this heating powerhouse boasts 4800 W. The SCH can be placed on the ground or against a wall, using a support bracket, available as an option. This heater is right at home, on construction sites and in workshops and garages. Choose the SCH when you need rapid, reliable heat.

- **SAFE AND RUGGED**
20-GAUGE STEEL
- **"COOL TOUCH" HOUSING**
- **4800 W HOUSED IN A SMALL UNIT**
- **OPEN COIL GENERATES INSTANT HEAT**
- **CLOSED AND PERMANENTLY LUBRICATED MOTOR (SCH4800T)**
- **VERSATILE: PERMANENT OR TEMPORARY INSTALLATION**
WITH OPTIONAL SUPPORT BRACKET

COLOURS

- **standard:** red (SCH48T models), canary yellow (SCH4800T)

FINISH

- epoxy-polyester powdercoat

MANUFACTURING

- 20-gauge steel cabinet
- sturdy handle for portability that also serves as cord rack and which adapts to the mounting bracket
- 6 ft. (2 m) 12 Awg. molded cable with 3-prong grounded, 30 A 250 V plug (except for SCH48TWBPL)
- 6 ft. (2 m) 12 Awg. molded cable for hard-wired connection (SCH48TWBPL)
- thermal protection with automatic reset

MOTOR

- 250 CFM fan (SCH48T models)
- closed and permanently lubricated motor and 300 CFM fan (SCH4800T)

ELEMENT

- nichrome element ensuring increased comfort
- cone-shaped to concentrate the air around the element

CONTROL

- built-in thermostat with control knob protector

INSTALLATION

- connects to a standard 30 A 250 V grounded receptacle (except for SCH48TWBPL)
- hard-wired into a wall junction box (SCH48TWBPL)
- mounting bracket that can rotate at 360° while preventing the unit from tipping

WARRANTY

- three years (SCH4800T)
- two years (SCH48T models)

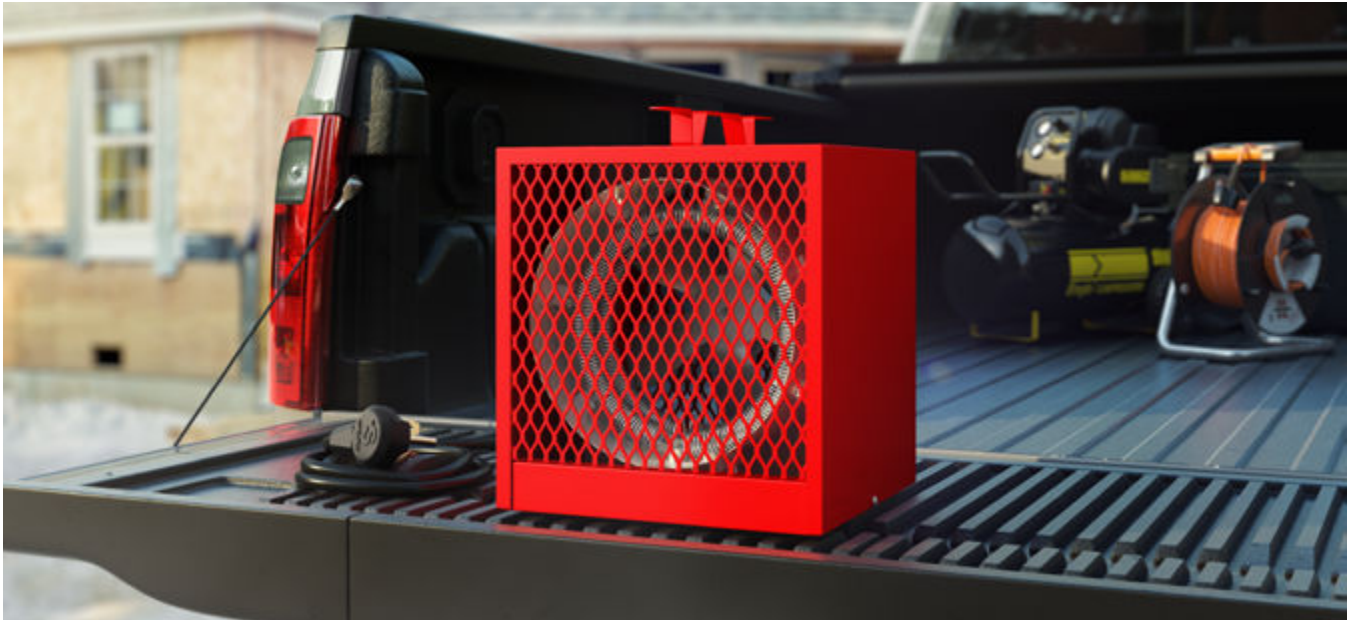
IDEAL FOR:

construction site, garages

°STELPRO

Stelpro reserves the right to modify descriptions, manufacturing specifications or prices without prior notice. No returns accepted on optional-colour products. For all the latest models and prices, please refer to our website at www.stelpro.com.





TECHNICAL SPECIFICATIONS

PRODUCT	POWER	VOLTAGE	MOTOR		CONNECTION	MOUNTING BRACKET	COLOUR	WEIGHT		PRICE
CODE	WATTS	VOLTS	CFM					KG	LB	
SCH48T	4800/3600	240/208	250	---	30 A 250 V PLUG	SOLD SEPARATELY	RED	5.9	13	164.00
SCH48TWBPL	4800/3600	240/208	250	---	HARD-WIRED	INCLUDED	RED	5.9	13	206.00
SCH4800T	4800/3600	240/208	300	CLOSED AND PERMANENTLY LUBRICATED	30 A 250 V PLUG	NOT COMPATIBLE	CANARY YELLOW	5.9	13	217.00

ACCESSORY

PRODUCT	DESCRIPTION	PRICE
SCH-WBB	mounting bracket (SCH48T model)	52.00

THROW DISTANCE AND HEAT RISE

MODEL	UNITS	THROW DISTANCE		HEAT RISE	
		M	FT	°C	°F
SCH48T	4.8	5.9	19'4"	34	61
SCH4800T	4.8	6.4	21'	28	51

TECHNICAL DRAWINGS

